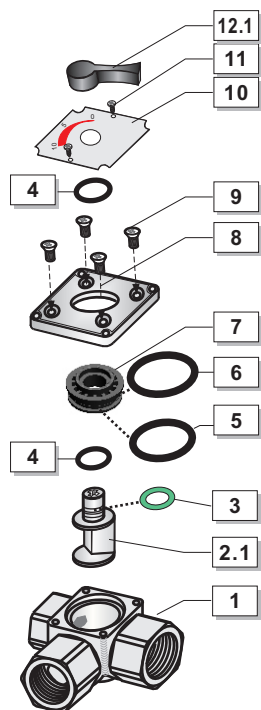


## FEATURES

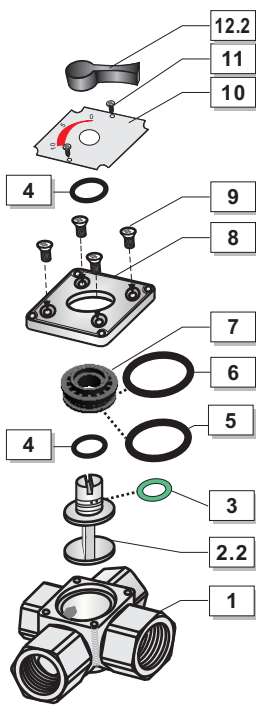
- ▶ Mixing valves are suitable for long-lasting operation because of special construction of bearings on axis.
- ▶ Small rotation torque of the valve allow motor actuator operation and in the same time reduce possibility of valve blocking .
- ▶ Compact housing construction does not allow any damages during mounting and also make possible quick and easy mounting of actuator.
- ▶ Valves are specially suitable for upgrading with actuators EUROMIX.
- ▶ Change first O-ring without discharging hydronic system.

## MIXING VALVE'S PARTS

ROTOMIX F3



ROTOMIX F4



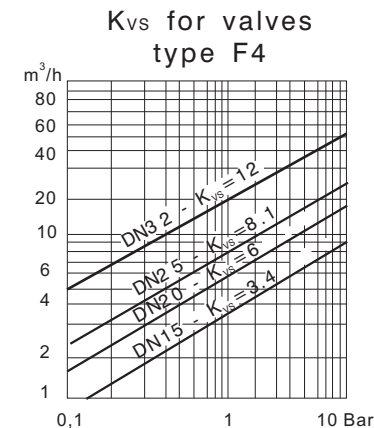
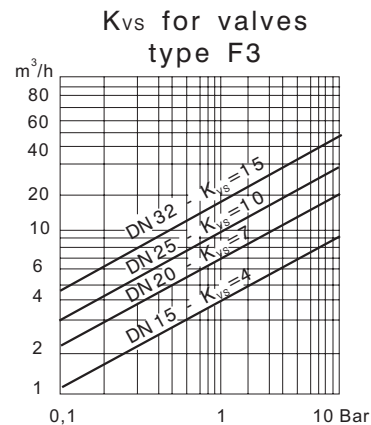
POS	NAME	PCS
1	Body Hot stamped CuZn39Pb3	1
2.1	Rotor with stem Brass CuZn39Pb3	1
2.2	Flap stem Brass CuZn39Pb3	1
3	O-seat 8.73x1,78 Viton FKM	1
4	O-ring 11.6x2.4 EPDM	2
5	O-ring 23.3x2.4 EPDM	1
6	O-ring 27x2.5 EPDM	2
7	Insert RYTON R-4-200 BL	1
8	Valves top alloy	1
9	Screw M5x10 DIN 965	4
10	Position plate Al	1
11	Screw 2.9x6.5 DIN 7981 BC	2
12.1	Handle of 3-way valve PA	1
12.2	Handle of 4-way valve PA	1

Spare O-Ring  
(Position 4)  
code: 500075

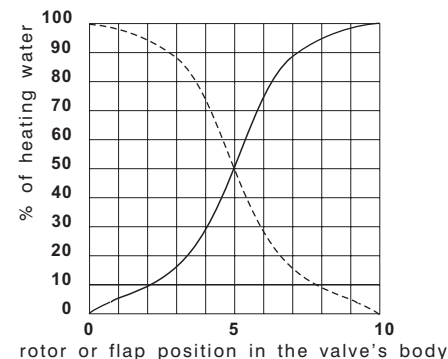
**FIRŠT-ROTOTEHNIKA, s.p.**,  
Radegunda 54, SI-3330 Mozirje, Slovenia  
tel: +386 3 898 35 00, fax: +386 3 898 35 35  
e-mail: info@first.si, http://first.si

# FIRST®

## BRASS MIXING VALVES ROTOMIX



### FLOW CHARACTERISTICS



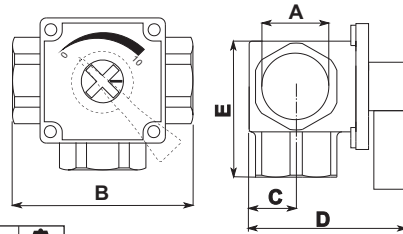
### Technical data:

Max. medium temperature.....	110°C
Max. medium pressure.....	6 bar
Rotation angle.....	90°
Torque.....	0.5 Nm
Housing.....	stamped brass
Rotor.....	brass
Bearing.....	4x O-ring, EPDM
To be used with actuators.....	EUROMIX

## ROTOMIX F3

Gap on stem shown rotor's position in the valve's body

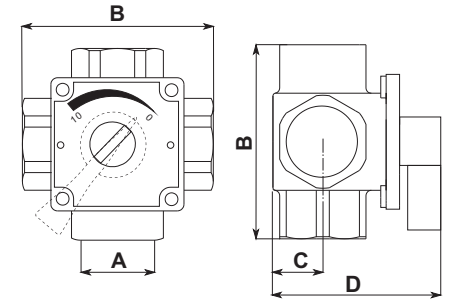
CODE	DN	A	B	C	D	E	K <sub>vs</sub>	KG	
41000	½"	15	½"	72	18.5	64	54	4	0.65
41001	¾"	20	¾"	72	18.5	64	54	7	0.55
41002	1"	25	1"	90	24	64	69	10	0.67
41003	1¼"	32	1¼"	90	24	64	69	15	0.89



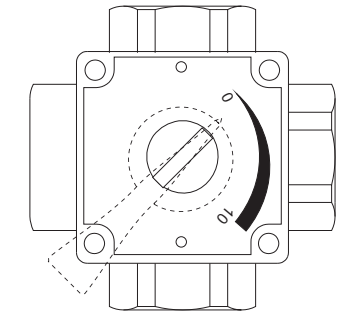
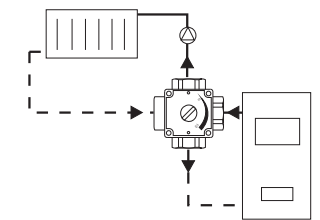
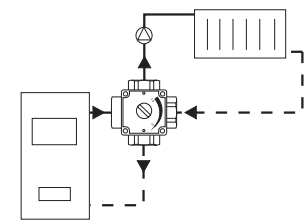
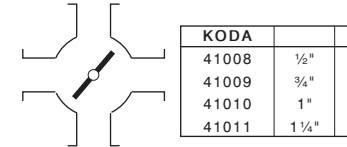
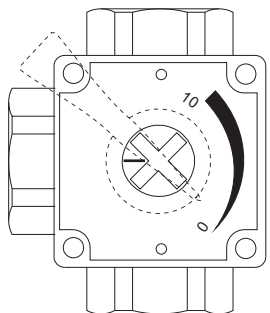
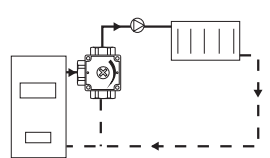
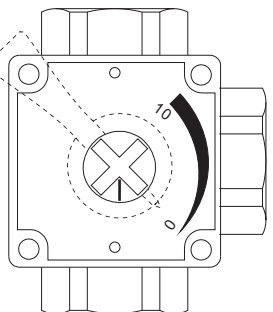
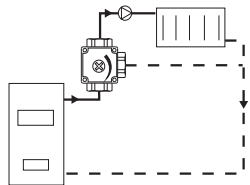
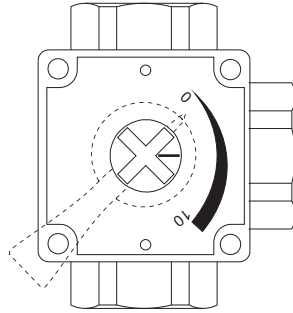
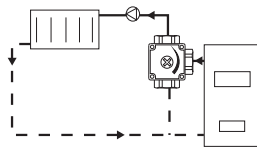
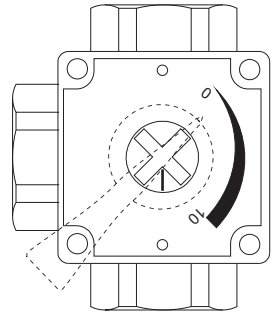
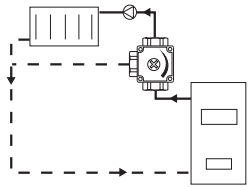
## ROTOMIX F4

Gap on stem shown rotor's position in the valve's body

KODA	DN	A	B	C	D	K <sub>vs</sub>	KG	
41008	½"	15	½"	72	18.5	64	3.4	0.70
41009	¾"	20	¾"	72	18.5	64	6	0.58
41010	1"	25	1"	90	24	64	8.1	1.33
41011	1¼"	32	1¼"	90	24	64		0.92



P<sub>MAX</sub> = 6 bar  
T<sub>MAX</sub> = 110°C



ALL MIXING VALVES ARE COMPATIBLE WITH FIRST ACTUATOR

**! WARNING !**

By installation must be observed to according to relevant local standards. The installation must be grounded.