

MOTORIZED BALL VALVE WITH BATTERY OPERATING

EMV 110 602/1590-B

FIRST®

Installing and mounting instructions



EMV 110..1590-B is used in system, where in case of power failure opens/closes ball valve. It can be used as safety element in various systems.

PROPERTIES

- manual ball valve opening/closing possibility
- setting the position of the ball valve in case of power failure - open/closed
- sound signaling possibility - additional connection of beeper
- battery power supply - 4x LR6-1.5V/AA-alkaline Duracell (batteries are inserted in the actuator)
- long lifespan and operation reliability

FEATURES

Nominal voltage: 230V, 50Hz, 0.5W
 Connection cable: 1.5m (including plug)
 Batteries: Battery power supply 4x LR6-1.5V/AA (DURACEL MN1500-alkaline)
 Life span of batteries: approx 2 years
 Opening / closing tiime: 25s/90°
 Medium temperature: 5° C. .110°C
 Ambient: 0° C. .55°C, 5..90% relative humidity
 Actuator protection class: IP55
 Protection class: 1 DIN VDE 0700-T1/EN 60335-1
 Ball valve: DN20-3 / 4 ", DN25-1" or DN32-11 / 4 "

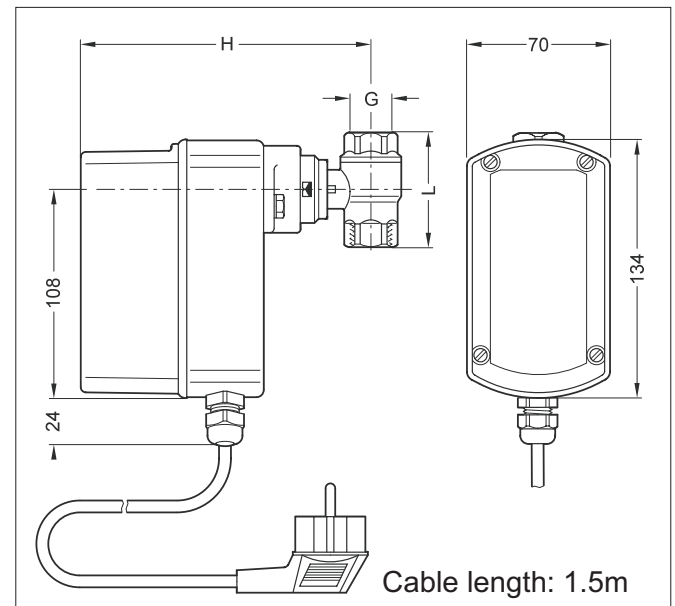
OPERATION

When you connect actuator to power supply, ball valve is turned in the basic position - closed (factory default).

In case of power failure actuator opens the ball valve using battery power.

The actuator has output for power failure. It can be used for voice signaling (additional connection of beeper 4-7VDC). However it reduces the life span of batteries.

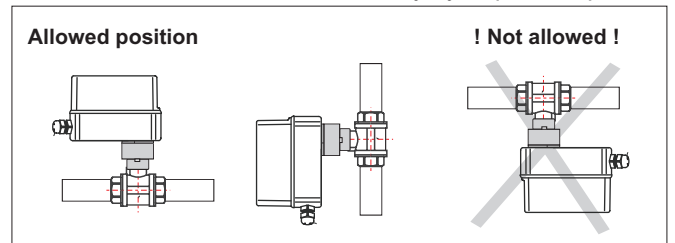
DIMENSIONS



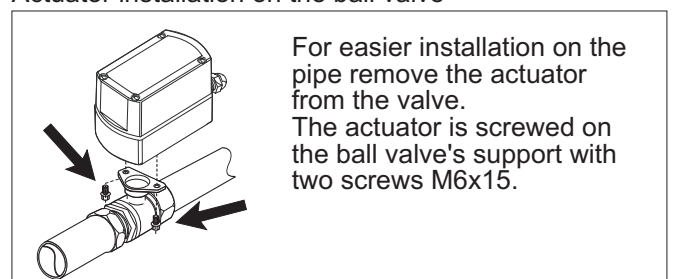
Type	G	DN	H	L	Kvs	Kg
EMV 110 602/1590-B-3	3/4"	20	152	57	41	1,1
EMV 110 602/1590-B-4	1"	25	163	68	68	1,3
EMV 110 602/1590-B-5	1 1/4"	32	173	81	123	1,5

INSTALLATION

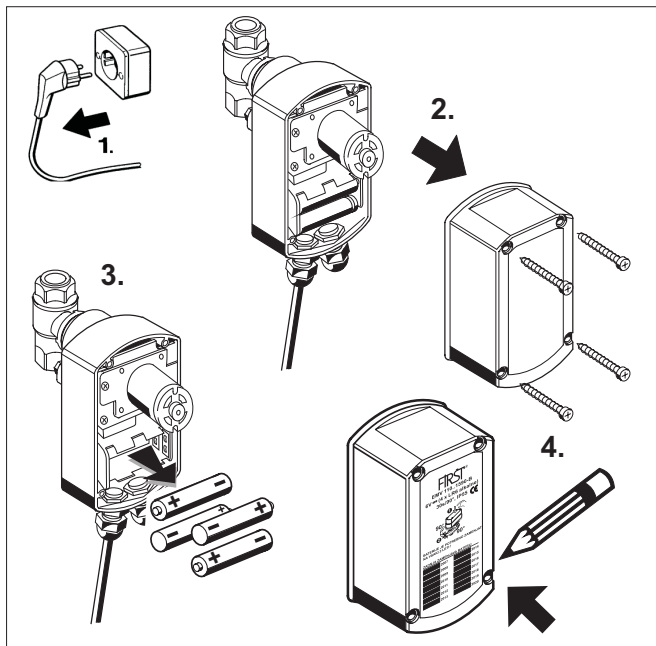
Installation should be carried out only by a qualified person!



Actuator installation on the ball valve



INSERT/EXCHANGE BATTERIES



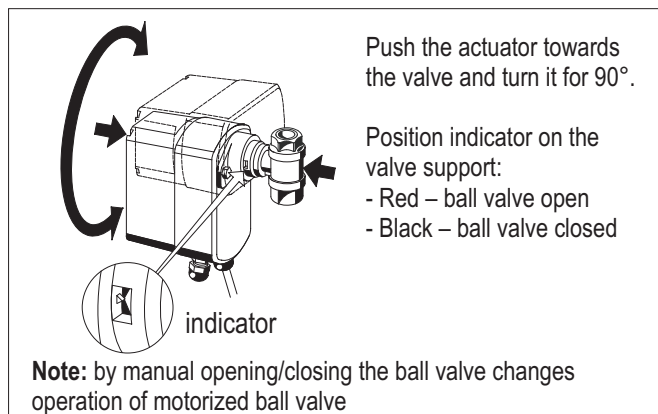
Batteries provide power supply to actuator in case of power failure.

1. Remove the plug from mains
2. Unscrew 4 screws on the actuator's cover and remove it
3. Pull out used batteries and replace them with new 4x LR6 – 1,5V/AA
4. On the cover write down when you replaced batteries
5. Assemble the actuator together

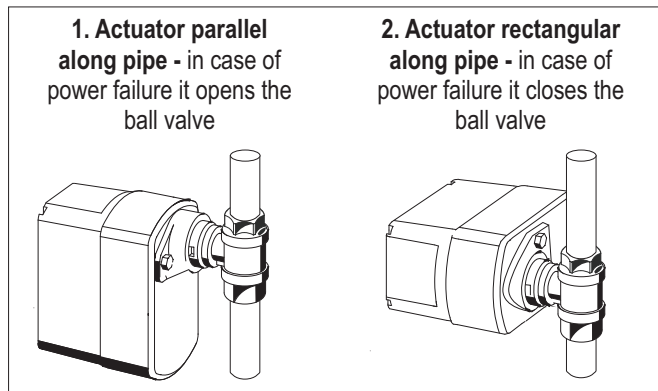
Batteries should be replaced approximately every two year.

! Before every intervention inside actuator must be power supply unplugged. Installation should be carried out only by a qualified person! After batteries exchange must be controlled proper function of actuator.

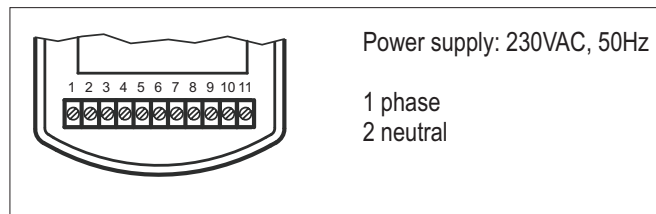
MANUAL OPENING / CLOSING THE BALL VALVE



ACTUATOR FUNCTION REGARDING ACTUATOR POSITION



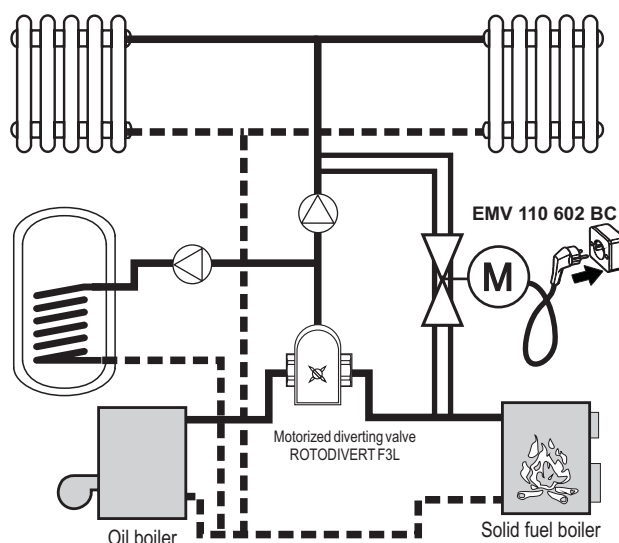
ELECTRICAL CONNECTION:



! In case that actuator doesn't work, check correct batteries insertion. By transport or by strong mechanical impact could happens that batteries fallout from their seats. Therefore are protected with scotch tape.

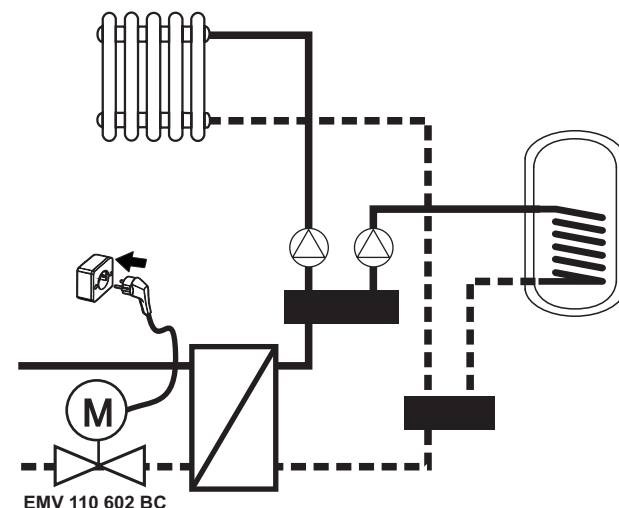
EXAMPLE OF USE

1. In case of power failure motorized ball valve opens by-pass pipe past all regulating elements.



The installation must be properly made that allows thermosyphon circulation.

2. In case of power failure motorized ball valve closes return pipe and prevents overheating the exchanger.



* Data subject to change without notice.